



**KINGSROSE**  
MINING LIMITED

ASX Announcement  
28 February 2020

### Talang Santo Update

## **Kingsrose takes key step to resumption of underground mining with start of Phase 2 deep drilling program**

### **Resource definition and extension drilling commenced to extend depth and strike extents of high-grade zones**

Kingsrose Mining Limited (ASX: KRM) (Kingsrose) is pleased to advise that it has taken an important step in its strategy to resume underground mining, with the Phase 2 deep drilling program at Talang Santo now underway.

This Phase 2 drilling programme aims to:

- Increase confidence in the resources as a basis for the probable reserve estimate, which will in turn be central to the underground feasibility study, and
- Identify extensions to known high grade mineralisation to be targeted for future resource expansion.

Kingsrose initiated the Phase 2 program in light of the positive results of the conceptual study on a potential resumption of underground mining at Talang Santo and the encouraging Phase 1 deep drilling results (see ASX Announcement of November 20, 2019).

Results of this Phase 2 programme, in conjunction with an assessment of appropriate underground mining methodologies, will enable the Company to further assess the potential for underground mining at Talang Santo.

It is anticipated that a total of nineteen surface holes for approximately 7,500 meters will be drilled as illustrated in Figure 1 below. It is expected that this drilling campaign will take approximately four months to complete using four to five rigs.

The results will inform the underground mine feasibility and an updated Mineral Resource Estimate for the Talang Santo Mine.

For personal use only



KINGSROSE  
MINING LIMITED

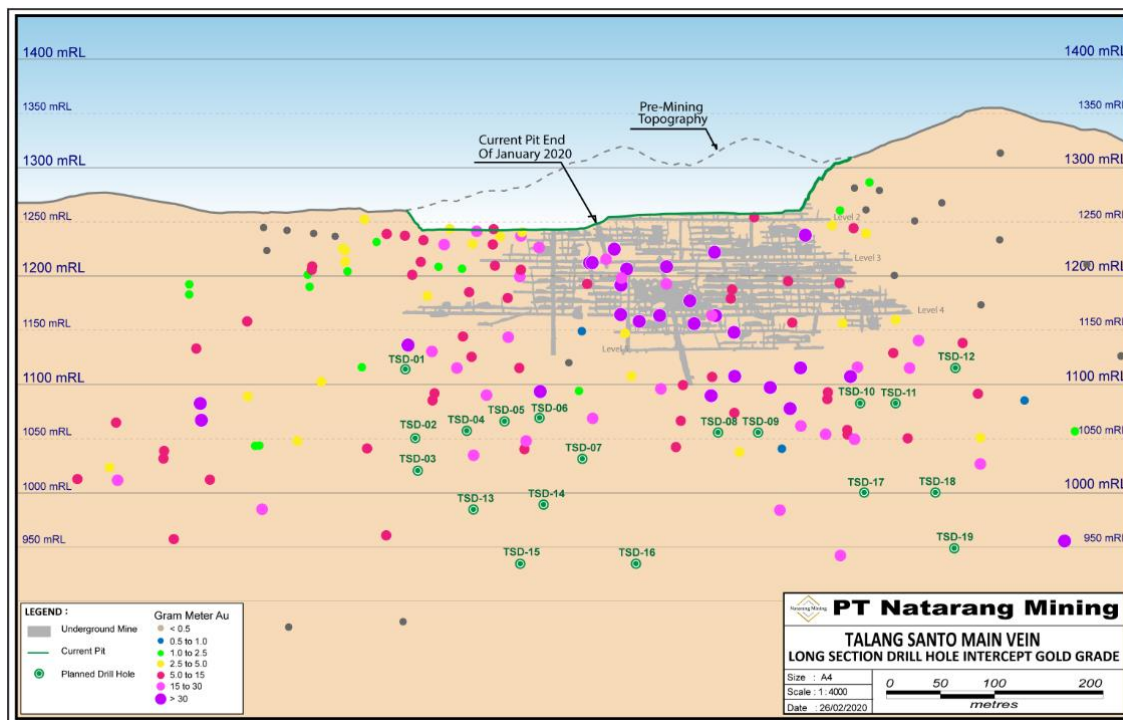


Figure 1 | Talang Santo Phase 2 Drill Plan Long Section with Gold Intercepts

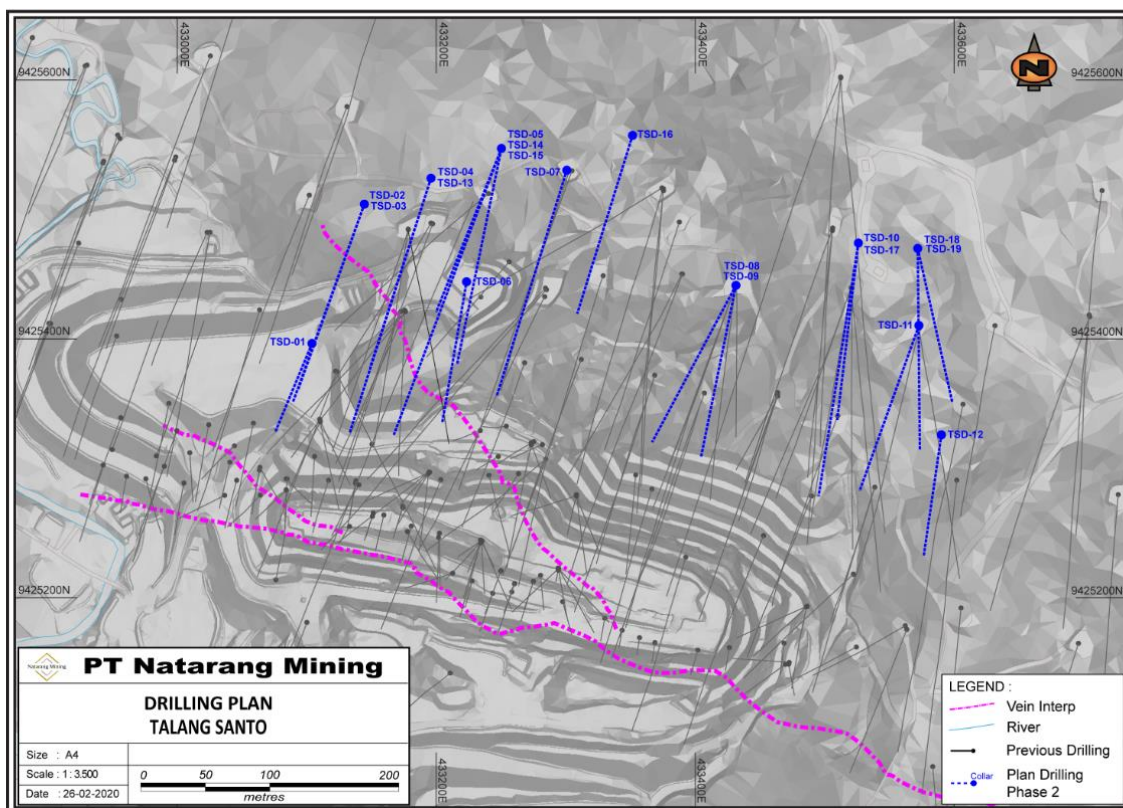


Figure 2 | Talang Santo Phase 2 Drilling Plan Map

For personal use only



KINGSROSE  
MINING LIMITED

-ENDS-

**For more information please contact:**

Karen O'Neill, Managing Director  
+61 8 9381 5588  
[info@kingsrosemining.com.au](mailto:info@kingsrosemining.com.au)

Paul Armstrong  
Read Corporate  
+ 61 8 9388 1474

**For further information regarding the Company and its projects please visit [www.kingsrosemining.com.au](http://www.kingsrosemining.com.au)**

For personal use only