



Finnmark

# Newsletter

EDITION 4 - DECEMBER 2025

Summer fieldwork  
in Finnmark 2025

1

Summer fieldwork in  
2025

3

Additional efforts in  
Finnmark

4

Exploration summary  
and further plans

5

At Kingsrose, we take pride in conducting responsible mineral exploration while maintaining open, transparent and respectful relationships with the communities, stakeholders and rightsholders in the areas where we work. Throughout the 2025 summer field season in Finnmark, our commitment to environmental stewardship and meaningful engagement continued to guide how we planned and carried out our activities.

This year's programme included extensive fieldwork across the majority of our license area to build a broader geological understanding of the belt, particularly the Kautokeino licenses, where geological data has historically been limited. The 2025 programme represented an important step in refining our geological models and identifying prospective areas for future exploration.

A detailed schedule was developed to determine when ATVs or helicopters could be used safely, while minimizing disturbance on reindeer, sheep, cattle and the moose-hunting season later in the autumn. Fieldwork ran from June to late September, allowing the team to complete sampling and ship all samples in time to receive laboratory results before the end of the year. In parallel with the on-ground programme, we carried out two airborne geophysical surveys:

- Airborne Gravity Gradiometry (AGG) was conducted on 400 m line spacing. The survey mobilised approximately 1.5 months later than originally planned to avoid disturbing reindeer that had moved into the area. Flying was completed in early September; however, due to delayed contractor arrival and reindeer movements, we were able only to cover around 30% of the planned survey. Despite the reduced coverage, the data collected provides valuable insights and will help guide our future exploration planning.
- Electromagnetics (EM) was flown on 200 m line spacing and completed in July. The AGG followed from August to September. Both surveys were planned in close cooperation with our rightsholders to avoid flying over areas where reindeer were present, helping to minimise disturbance during sensitive periods.

We acknowledge that some activities caused temporary disturbance, and we sincerely apologise for any inconvenience. Strengthening our engagement and improving the clarity, frequency and consistency of our communications remains a key focus.

Our summer work is now complete, and we look forward to sharing the results and next steps once all final data has been analysed and made publicly available.

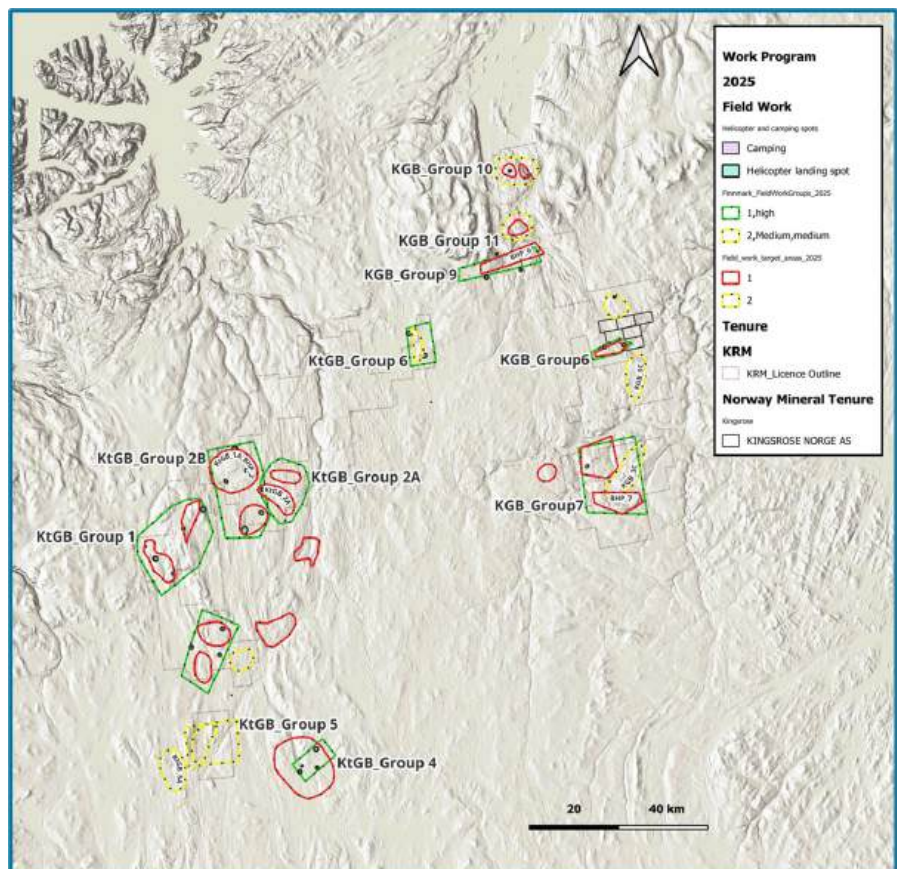
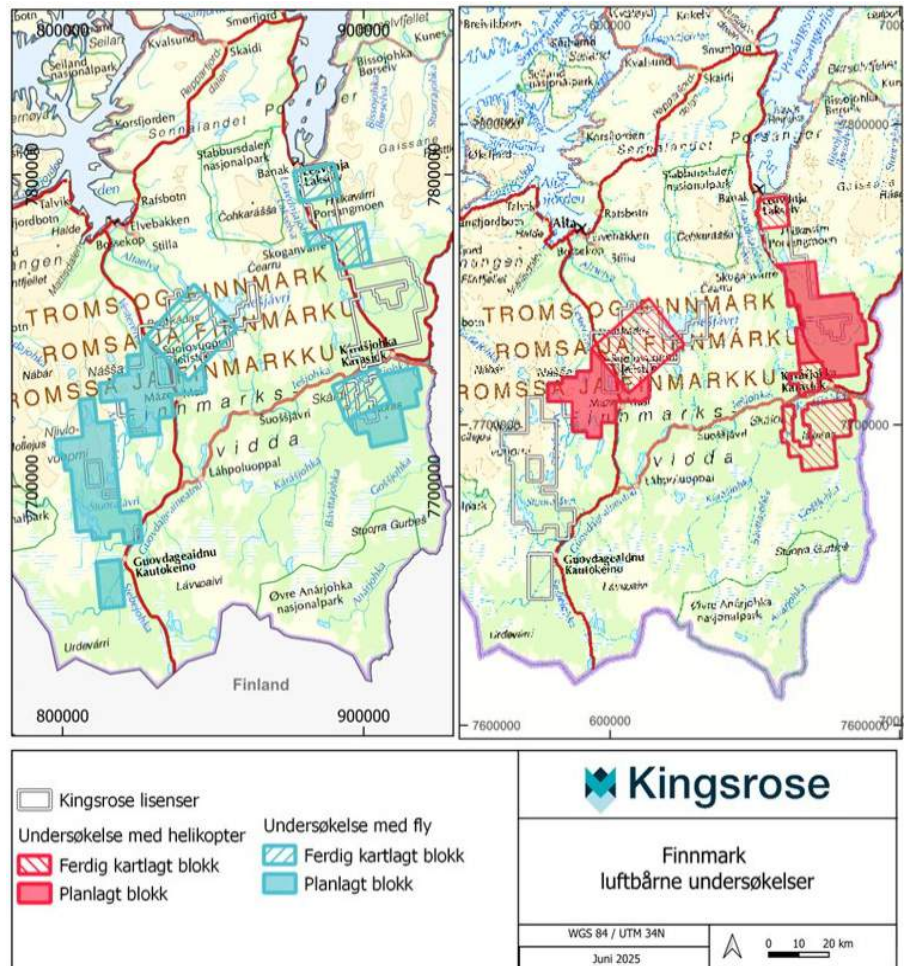




These maps show the areas covered by our 2025 fieldwork, focusing on geological mapping and small-scale rock sampling to build a broader understanding of the geology across our license areas.

Throughout the season, we worked closely with reindeer herding districts and farmers to minimise disturbance. This included avoiding areas where reindeer, sheep, and cattle were present and adjusting flight routes in cooperation with our stakeholders and rightsholders. Based on previous community feedback, we have also steered clear of bird nesting sites to protect habitats.

Our approach continues to be shaped by ongoing dialogue with rightsholders and stakeholders, and we remain committed to adapting our plans wherever possible to reduce impacts on people, animals and the environment.



Map showing our areas of fieldwork and airborne surveys this summer





# Our summer fieldwork in 2025 and winter results

## Areas of Work:

During the 2025 summer season, Kingsrose completed airborne geophysical surveys across our license areas in Porsanger, Karasjok and Kautokeino. In addition, we completed helicopter-supported fieldwork in Karasjok and Porsanger, and ATV-supported fieldwork in Kautokeino. These activities were designed to broaden our geological understanding of the region and to follow up on promising targets identified earlier in the year.



Anders, our lead field technician is navigating the terrain.



Jasmin, one of our geologists, taking rock samples



## Spring Airborne Electromagnetic Survey results:

This summer, Kingsrose completed a 13,065 line-km Airborne Electromagnetic (AEM) survey across the Finnmark BHP Alliance area. The results identified eight new clusters of conductive anomalies in Karasjok North, including a standout 800 m anomaly at Lavttévárri located near previously reported high-grade copper at surface. These add to the six clusters announced earlier from the Virnečohkka area. These findings were detailed in an ASX announcement, the formal market update companies provide to the Australian Securities Exchange to share significant technical and corporate information with the public.

## 2025 Fieldwork highlights:

Our summer field programme focused on building a more complete geological picture across our licenses, particularly in areas with limited historical data. Key components include:

**Helicopter-supported fieldwork in Karasjok and Porsanger:** Between the months of July and September we carried out helicopter-supported mapping in selected areas of Karasjok and Kautokeino. This work included rock sampling and soil sampling to improve our understanding of the local geology. The helicopter was utilised to transport personnel and equipment safely in and out of remote location, areas that would otherwise be inaccessible or require impractically long travel on foot. This approach allowed our team to efficiently complete high-quality geological work in the field. All flights and landing zones were planned in cooperation with local rightsholder and stakeholders to avoid disturbance on reindeer, people and livestock.

**ATV-supported fieldwork in Kautokeino:** Between the months of July and September we completed fieldwork across our licenses in Kautokeino. This work was supported by a local contractor who provided ATVs and drove our geologists to and from the field, enabling access to areas that would otherwise be difficult to reach on foot. The use of local expertise and equipment helped ensure safe, efficient and low-impact operations throughout the programme.

**Electromagnetics survey (EM):** A helicopter-based EM survey with 200 m line spacing was carried out mid-June through to July. This work provides high-resolution data on subsurface conductivity and supports follow-up targeting.

**Airborne gravity survey (AGG):** The AGG survey commenced in late-August and was completed in early-September. The survey mobilised 1.5 months after the initial schedule, due to delayed mobilisation by the contractor. We finished flying early September but managed to only fly roughly 30% of the planned survey, due to timing restrictions and reindeer movements.

## Summary of Findings:

Our 2025 summer activities are now complete, and results are currently being processed and interpreted. A follow-up newsletter will be published once all data is finalized and made public in an ASX-announcement, summarizing key geological findings and outlining next steps.



## Timeline of Kingsrose activities at Finnmark between June and December 2025

June	July	August	September	October	November	December
<ul style="list-style-type: none"><li>• Shared newsletter with the community.</li><li>• Commencement of Helicopter-EM survey.</li><li>• Geological mapping at key locations.</li></ul>	<ul style="list-style-type: none"><li>• Geological mapping at key locations</li><li>• Completion of helicopter EM-survey.</li></ul>	<ul style="list-style-type: none"><li>• Geological mapping at key locations</li><li>• Commencement of AGG Survey.</li></ul>	<ul style="list-style-type: none"><li>• Completion of AGG survey.</li><li>• Completion of geological mapping.</li><li>• Attended the Energy, Industry and Circularity Conference in Vadsø.</li></ul>	<ul style="list-style-type: none"><li>• Interpretation of data.</li><li>• Attended the FEM-Conference.</li></ul>	<ul style="list-style-type: none"><li>• Interpretation of data.</li></ul>	<ul style="list-style-type: none"><li>• Interpretation of data.</li><li>• Shared newsletter with the community.</li></ul>

## Additional Efforts and Lessons Learned



*Kjell Magne presenting Kingsrose at the FEM Conference in Levi.*



*Kjell Magne presenting at the Energy, Industry and Circularity Conference in Vadsø.*

**Attending the FEM Conference:** This autumn, we participated in the FEM (Fennoscandian Exploration and Mining) Conference in Levi, an important gathering for the Nordic mining and exploration industry. Kjell Magne had the opportunity to present our approach to operating in Finnmark, sharing how we integrate community engagement, environmental responsibility and regional context into our exploration strategy. The presentation generated significant interest and stood out in a programme largely focused on technical and geological topics. Following the session, our booth, hosted by Kjell Magne Grønnli, Peter Dodds and Grace Howe, saw strong attendance from people across the industry. This led to many valuable conversations about responsible exploration in the Nordics and highlighted the importance of social and environmental consideration in exploration practices.

**Attending the Energy, Industry and Circularity Conference in Vadsø:** This autumn, Anna Bolle, Kjell Magne Grønnli and Roy Arthur Olsen attended the Energy, Industry and Circularity Conference in Vadsø, organised by the Finnmark County. The event brought together representatives from across a wide range of industries to discuss opportunities, challenges and future development in Finnmark. For Kingsrose, the conference was an important opportunity to learn more about regional initiatives, the growing potential within Finnmark, and Finnmark County's long-term vision for the region. We were also pleased to present our approach to exploration and our way of working in Finnmark, which opened up valuable dialogues with peers, policymakers and other stakeholders.

**Local Procurement and Employment:** As in previous years, we remain committed to contributing positively to our host communities in Karasjok, Kautokeino, and Porsanger. Strengthening local procurement and increasing the use of local services, expertise and labour is a key part of this commitment. These collaborations not only support local businesses but also help us continuously improve the way we operate in the region.

This summer, we partnered with several local contractors, including:

**ATV-supported mapping in Kautokeino:** A local contractor provided ATV transport for our geologists, enabling safe and efficient access to areas that would otherwise be challenging to reach on foot. We also hired a boat and transport services from a local provider in Kautokeino to further support fieldwork and access to field locations.

**Logistics support for helicopter operations:** A company from Karasjok supported coordination and logistics during our airborne survey programme.

**Helicopter landing spots:** Residents in Karasjok and Porsanger provided landing locations, helping our operations to remain safe, practical and well aligned with local land use

**Welcoming our new Community Contact and opening our Kautokeino Office:** In October, we were pleased to welcome Roy Arthur from Kautokeino as our new community contact. Roy Arthur brings deep knowledge of local communities, cultural practices and land use in the region, and will play an important role in strengthening dialogue, improving information flow, and further align our activities with local expectations and needs.





### Exploration Summary

Over the Our 2025 exploration programme has been one of our most comprehensive to date, combining fieldwork, airborne geophysics and targeted follow-up investigations across our licences in Kautokeino, Karasjok and Porsanger. These activities have strengthened our geological understanding of the region and continue to guide our search for copper, nickel and PGE-mineralisation.

Fieldwork this summer focused on mapping, rock sampling and soil sampling to refine geological models and assess prospective areas, supported where needed by helicopter transport and local ATV contractors to reach otherwise inaccessible areas. In parallel, our AEM and AGG surveys have provided valuable information to help identify new areas for further investigation. The AEM survey completed earlier in the year has already outlined multiple new clusters of conductive anomalies across Karasjok North, building on previous clusters identified at Virdnečohkka, highlighting several priority targets for potential follow-up work.

The interpretation of the results are now underway, with our geoscience consultants analysing the results so we can prioritise future areas for work. We are excited to share the final outcomes of our 2025 summer programme once the interpretations are completed and results have been released publicly through an ASX announcement.

### Looking Ahead

As we prepare for the next phases of our work, we remain committed to strengthening how we operate in Finnmark. In 2026, we aim to continue improving our engagement efforts by maintaining open dialogue, increasing the clarity of our communications, and ensuring that local perspectives remain central to our decision-making. We will also continue to prioritise the use of local contractors and businesses, and to participate in key regional conferences and industry forums where we can learn, share our approach, and contribute to broader discussions about responsible exploration in the Arctic.

Once results from this year's exploration programme are fully interpreted and our planning for the 2026 field season is underway, we look forward to sharing these preliminary plans with our rightsholders and stakeholders. Feedback will play an essential role in shaping our activities so that our exploration programme does not negatively impact reindeer, livestock or local communities. We remain committed to working collaboratively, adapting our approach where needed, and carrying out exploration in a way that respects people, land and livelihoods.



Reach out to us for  
more information

[info@kingsrose.com](mailto:info@kingsrose.com)  
[www.kingsrose.com](http://www.kingsrose.com)

Torgveien 12, 9700 **Lakselv**  
Fitnodatgeaidnu 17-19, 9730 **Karasjok**  
Arnes, 338/270 - 8540 **Ballangen**

Folg oss:

Kingsrose Norge



KingsroseFinnmark



 **Kingsrose**